

# RUMPH SURVEYS

Licensed Land Surveyor

DATE OF FIELD SURVEY: 04-29-85

DATE FORM PREPARED: 02-13-86

JOB NO: 85-139

BOOK: R-153 PAGE: 13-18

## CERTIFIED LAND CORNER RECORDATION

### DESCRIPTION OF CORNER EVIDENCE FOUND, AND ORIGINAL RECORD (If known)

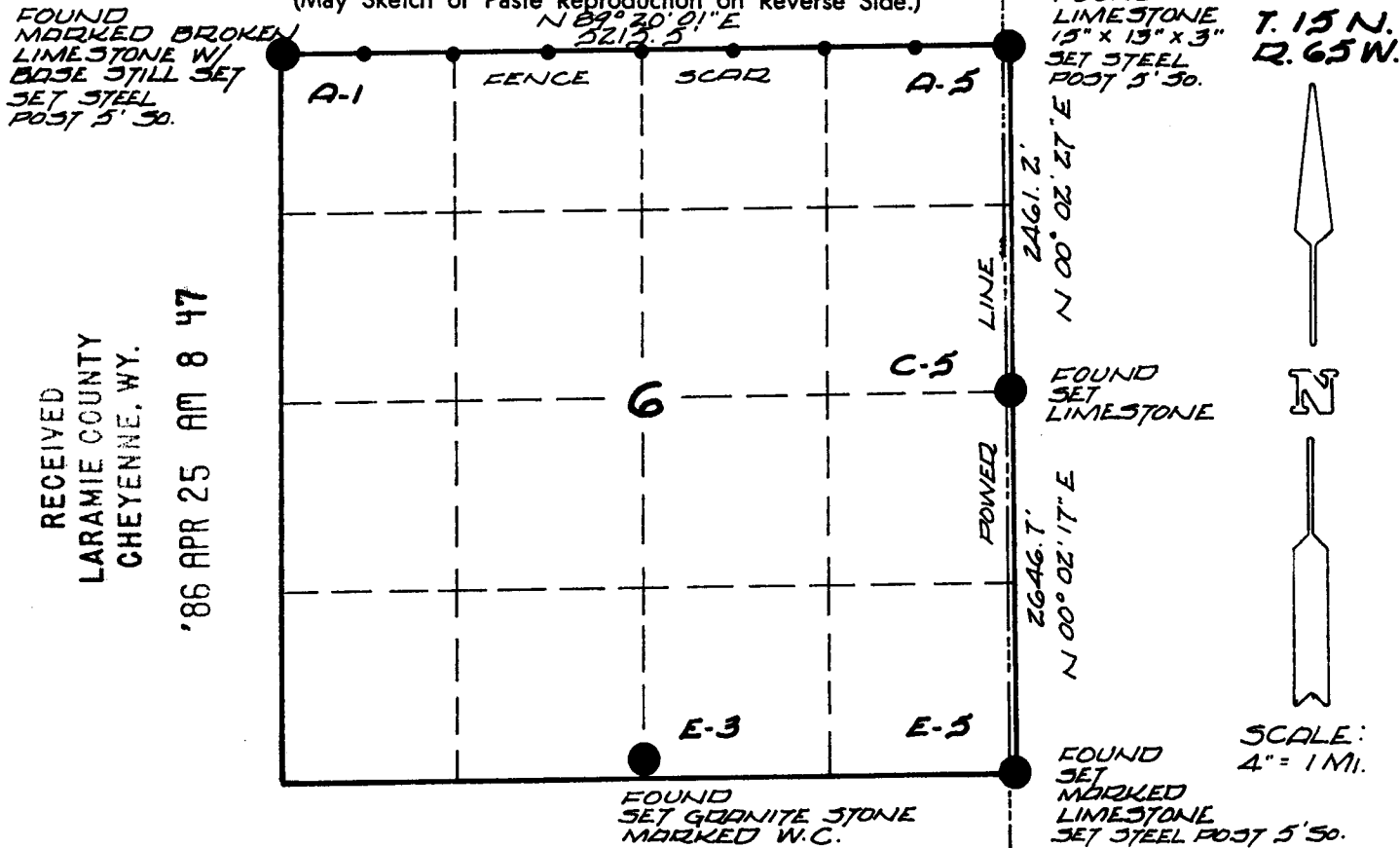
- Found set stone, NW corner, Sec. 6, T 15 N, R 65 W - Limestone, marked, broken with base still set.
- Found set stone, NE corner, Sec. 6, T 15 N, R 65 W - Limestone, 15"x13"x3".
- Found set stone, SE corner, Sec. 6, T 15 N, R 65 W - Marked limestone.
- Found set stone, E 1/2 corner, Sec. 6, T 15 N, R 65 W - Limestone.
- Found set stone, Witness to S 1/2, Sec. 6, T 15 N, R 65 W - Granite, marked W.C.

### DESCRIPTION OF MONUMENT AND ACCESSORIES ESTABLISHED TO PERPETUATE THE ORIGINAL LOCATION OF THIS CORNER:

Set steel post 5' south of NW, NE and SE corners; no post set by east 1/2 corner; south 1/2 corner witness set stone observed but not surveyed in.

### SKETCH, WITH COURSE AND DISTANCE TO ADJACENT CORNER IF DETERMINED IN THIS SURVEY.

(May Sketch or Paste Reproduction on Reverse Side.)



608217

RECEIVED  
LARAMIE COUNTY  
CHEYENNE, WY.

'86 APR 25 AM 8 47

SCALE:  
4" = 1 MI.

I, Bryce E. Rumph certify that I have carefully performed or reviewed the work done on the diagrammed corner as reported on this recordation form and approve the same.

*Bryce E. Rumph*  
Signature of Surveyor L. S. 538  
Registration No.

STATE OF WYOMING,  
Office of Clerk and Recorder,  
County of Laramie

This "corner record" was filed for record on the 25 day of April, 1986, was noted on the cross-index plat and is assigned page No. \_\_\_\_\_, in book No. \_\_\_\_\_.

*James C. Whitehead*  
County Official

Cross Index No.	T.	R.	Mer.
A-1	T. 15 N	R. 65 W	Mer.
A-5	T. 15 N	R. 65 W	Mer.
C-5	T. 15 N	R. 65 W	Mer.
E-5	T. 15 N	R. 65 W	Mer.
E-3	T. 15 N	R. 65 W	Mer.
	T. _____	R. _____	Mer.
	T. _____	R. _____	Mer.

BOOK 1227

562